

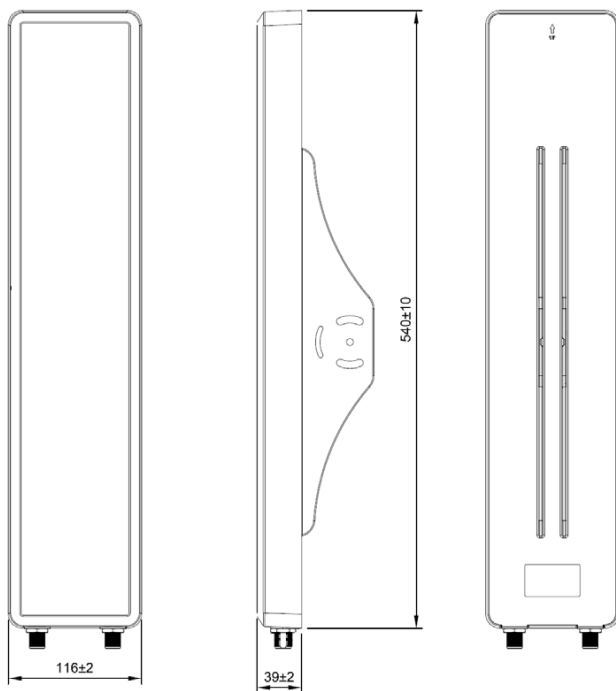
Electrical Specifications

• Frequency Range	2.4 – 2.5 GHz
• Gain	14 dBi
• Polarization	Dual Slant, $\pm 45^\circ$
• Horizontal Beamwidth	70° (3 dB), 90° (6 dB)
• Vertical Beamwidth	13° (3 dB)
• Downtilt	0°
• Front-to-back Ratio	-25 dB (Max.)
• Isolation	20 dB (Min.)
• VSWR	2.0 : 1 (Max.)
• Impedance	50 Ω
• Power Handling	10 W (cw)
• Lightning Protection	DC Ground

Environmental and Mechanical Specifications

• Temperature	-40° C to +80° C
• Humidity	95% (55° C)
• Waterproof	IPX5
• Wind Loading	Up to 216 km/h (134 mph)
• Radome Color	Gray
• Radome Material	ASA, UV Resistant
• Weight	970 g*
• Dimensions	540 x 116 x 39 mm
• Connector	N-Female
• Mounting Kit	Pole- and Wall-Mount
• Downtilt	22° (Max.)

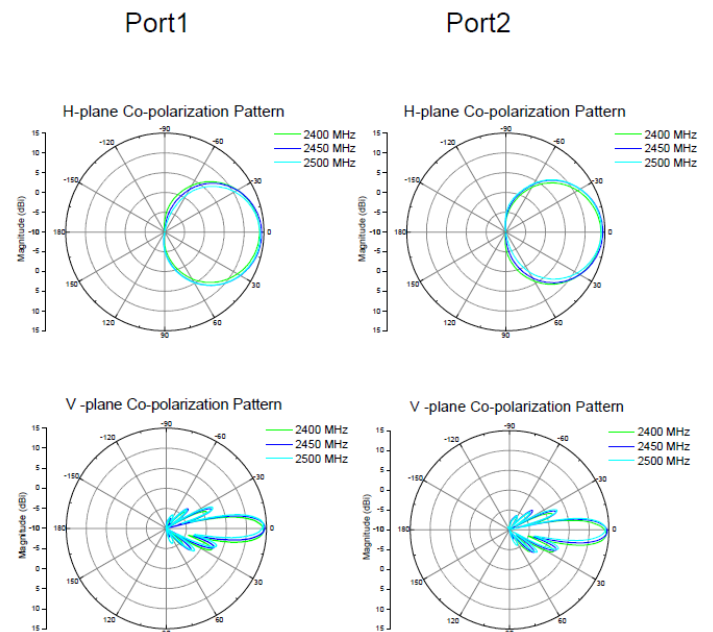
Product Drawing



*1.4 kg with Mounting Kit



Antenna Patterns



Product Ordering Information

- 2.4 GHz 14 dBi, 70° Beamwidth, Dual-Slant, $\pm 45^\circ$, Directional Antenna with Mounting Kit (Part No.: SD.AN-2S14-01)

Contact Us

- Email: sales@altaitechnologies.com

Although Altai has attempted to provide accurate information in these materials, Altai assumes no legal liability for the accuracy and completeness of the information. All specifications are subject to change without notice.