

## Super WiFi Combines Extended Range with Quick & Simplified Deployments for Underserved First Nations

The Lheidli T'enneh First Nation, located on the outskirts of Prince George in Northern British Columbia, enjoys beautiful vistas and bountiful natural resources, but has lacked high speed and affordable network access for their student population and the community at large.

And, while a Telus fiber line terminated just ¾ of a mile away from the Lheidli band office, and surrounding homes, the always critical last-mile connectivity was hindered by significant geographic obstructions and, of course, funding challenges.

Chief Dolleen Logan shared, "It was frustrating having a Telus fiber termination point sitting within a mile of our band office, but the Nechaho River and a significant tree-lined hill sat between us and that fiber." As a result, band members were using their cellular phones as wifi hot spots and incurring outrageous monthly cell bills.



The Altai A8 Ein Super Wifi base station can deliver Wifi connectivity over distances of up to a Mile

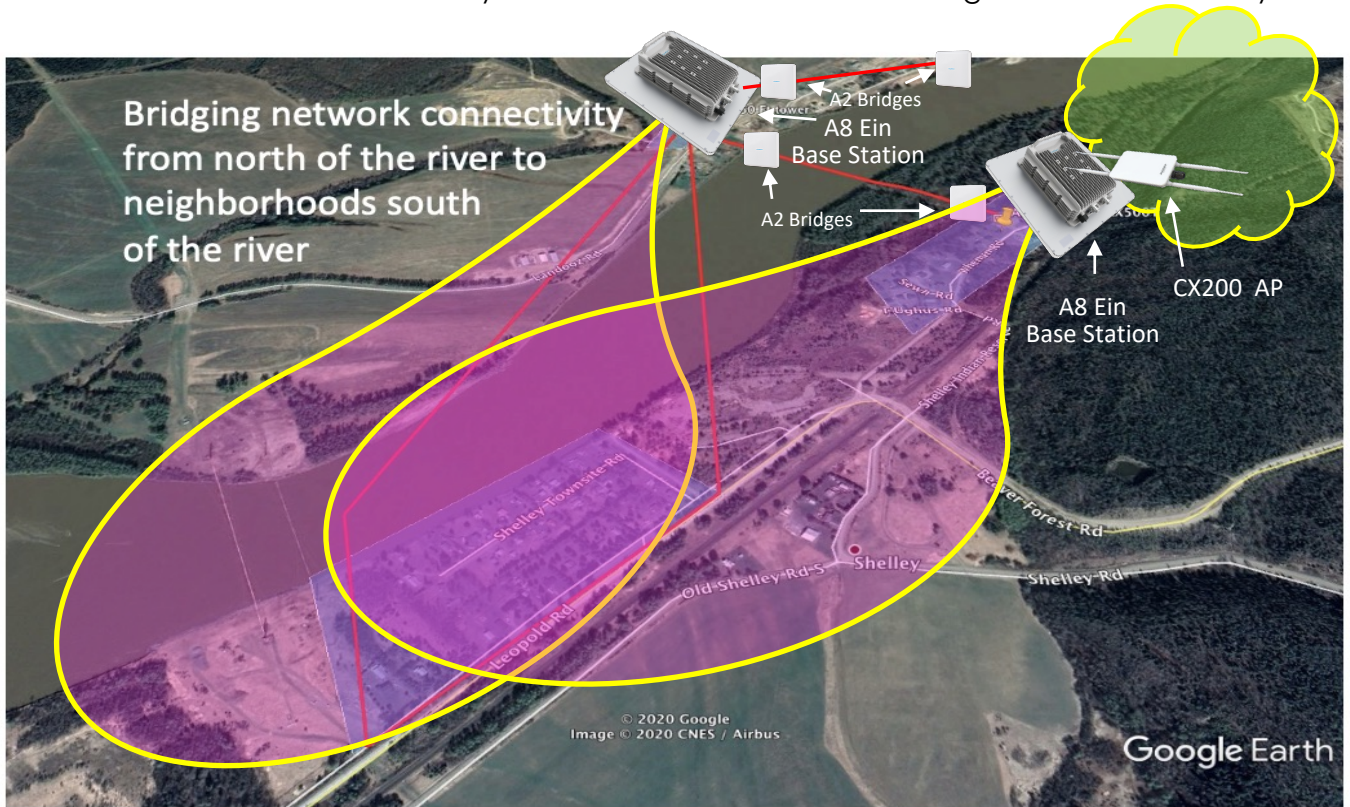
With the onset of COVID-19 the four public post-secondary institutions in northern British Columbia, spearheaded by UNBC, approached the Lheidli T'enneh band leadership to assist with organizing funding in support of its efforts to drive delivery of "last mile" network connectivity for students in underserved first nation communities. UNBC Alumnus, Ken Leung, now head of global business development for Altai Technologies, learned of this initiative and shared how a single Altai Super WiFi base can support connectivity for WiFi enabled devices (smart phones, tablets, laptops... etc) over distances of up to 1.7km.



**Lheidli T'enneh**

After sharing details with the Band leadership about Super WiFi's ability to quickly and cost-effectively deliver the network access they so desperately needed, the decision was made to move forward. UNBC worked with the other northern BC post-secondary institution Presidents' Covid-19 response project to guide the band through securing private funding assistance. After Krysp Wireless, Altai's master distributor for the US and Canada, received sign-off on their network design, the deployment process commenced and was completed in less than a week - despite torrential down pours.

Altai's Super WiFi technology was the ideal solution for bridging this connectivity gap and Lheidli T'enneh First Nation's deployment was completed in October of 2020 by Krysp Wireless with assistance from MicroAge – Krysp's, Northern BC reseller partner. Residents now have robust wireless network connectivity both indoors and outdoors throughout the community.



Super WiFi is delivering connectivity for over 80 homes and the Lheidli T'enneh surrounding community over distances of up to three quarters of a mile with just 3 Super WiFi base stations and 4 wireless bridge units.

Ken Leung, Altai's VP of Business Development, said, "It is especially gratifying to return to a region where I lived, worked and attended university and see my company's technology having such a positive impact on historically underserved BC communities."

Beau Peters, Krysp Wireless President shared, "UNBC, Lheidli T'enneh's leadership and our Northern BC reseller - MicroAge – were terrific partners in making this project a reality and should serve as a model for other Indigenous communities across Canada looking to pursue deployment of reliable, cost-effective network access."

### About Altai Technologies::

Since its inception in 2002, Altai Technologies has been a leading global provider of carrier-grade WiFi products and technologies with deployments in over 100 countries. The Altai Super WiFi product line includes a complete portfolio of indoor and outdoor products for carriers, WISPs and enterprises to support expansive outdoor and heavy industrial use cases.

Krysp Wireless is Altai Technologies master distributor for the US and Canada with offices in Kansas City and Toronto.

For distribution opportunities or a site-specific design consultation, reach out to us at...

[info@kryspwireless.com](mailto:info@kryspwireless.com)

Tel: +1 (816) 600-4220