

Trailside RV Park Addresses Guest Connectivity Challenges by Deploying Super WiFi

Over the years, thousands of travelers seeking an overnight spot to rest, RV vacationers, retirees and members of the mobile workforce (construction workers, pipe fitters, electricians, etc) and others passing through western Missouri on I-70 stop to enjoy the relaxed RV lifestyle Trailside RV Park and Campground offers. And, it's the little touches, creature comforts and clean facilities that drive Trailside's business with repeat guests.



RV enthusiasts are serious about their need for creature comforts and wireless connectivity has moved to the top of that list with society's heavy reliance on all things digital. And, while Trailside has provided wifi connectivity for many years, outages, poor coverage and resulting guest complaints had reached a critical level by Summer of 2021 causing the park's manager – Austin Ritter – to look at new technology.



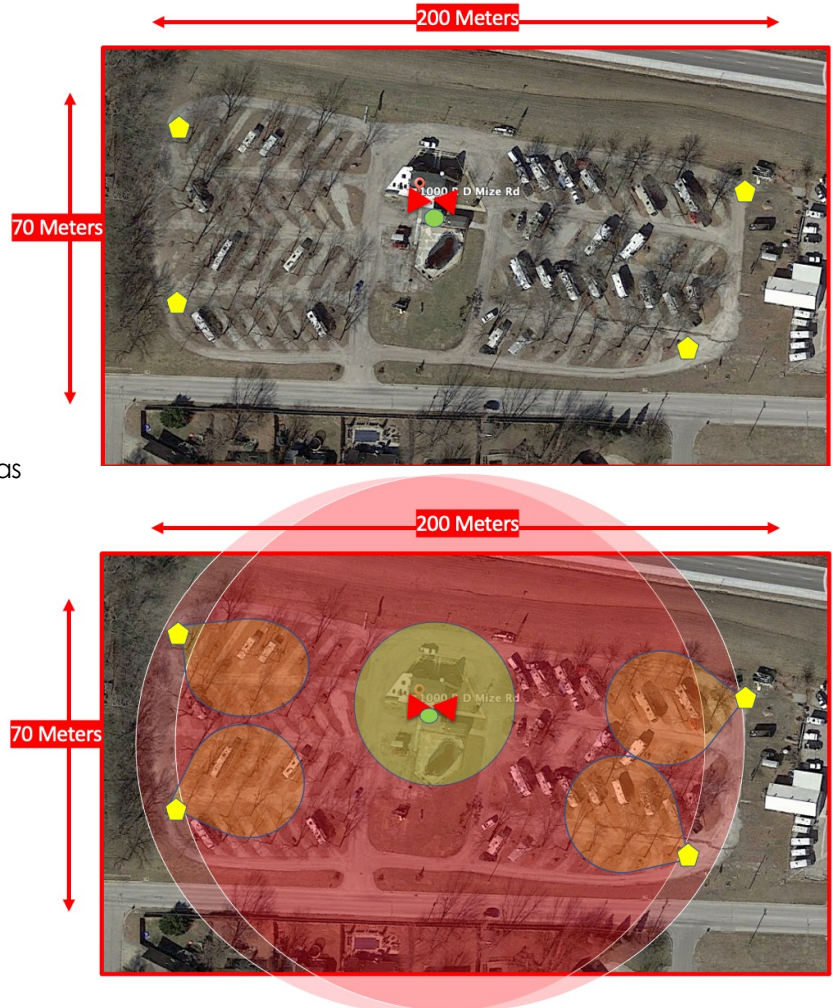
Trailside RV Park and Campground has provided families and traveling workers with a pleasant stop over point in a convenient, central US location since the mid-1960s

Trailside RV Park's history dates back to the 1960s when it was established as a family owned and operated campground. But, as the popularity of RV's grew, the property was converted into an RV park in the 1970s. The name "Trailside" refers to what used to be a stretch of agricultural land adjacent to the property in Grain Valley, Missouri stretching nearly 10 miles to the edge of Kansas City. Over the last two decades Grain Valley has boomed into a suburban juggernaut of roughly 15,000 residents turning a once peaceful area of farmland in the "middle of nowhere" into a thriving bedroom community.



The Challenge: The existing wifi equipment was only providing coverage 30-40 feet away from the park office and RV parking spots beyond this point were not receiving any signal at all. The property is 600 feet long by 250 feet deep with limited options for mounting access points and terrain that slopes away from the centrally located park office where the primary network connection terminates. Austin needed solid coverage all the way to each end of the property while supporting enough capacity for guests to stream movies and TV, conduct video calls and other data capacity intensive tasks.





A Successful Result: Super WiFi now delivers exceptional indoor / outdoor coverage and throughput across the entire property with the use of just 3 Super WiFi access points – all mounted at the centrally located park office. To enhance coverage at the far east and west ends of the grounds, small repeaters were used to re-populate the signal generated by the primary APs.



Qty 2   **AX500-T**
Omni Smart Antennas
Dual-Band
2x2 802.11ac
MU-MIMO

Qty 4   **C1n**
Pico Cell
Repeater

Qty 1   **C2s**
Dual-Band
2x2 802.11ac

About Krystp Wireless

Krystp Wireless is Altai Technologies' North America Master Distributor of Super WiFi technology focused on building scaled distribution of Altai's product line across the US and Canada. Krystp has offices in Kansas City and Toronto and a growing network of reseller partners across North America.

About Altai Technologies' Super WiFi Product Line

Super WiFi has been deployed extensively around the world beginning in 2007 to address the most challenging wireless access applications where traditional WiFi vendors' products fail to deliver the desired coverage, or prove too costly due to the high number of required access points.

Primary examples where Super WiFi regularly differentiates itself from other WiFi products include expansive outdoor area coverage, challenging line of sight settings, and RF interference laden locales such as heavy manufacturing facilities. Altai's extensive product line supports connectivity for any wifi enabled device and includes large macro base stations capable of delivering coverage over distances of up to a mile in addition to a suite of micro access points, repeaters and wireless bridge products.

Contact Krystp Wireless for Super WiFi solution design and pricing support:

 : 816.600.4220

 : info@krystpwireless.com