

Super Wifi Delivers Cost Effective, Wide Area Coverage for Jackson Lake Campground and Marina

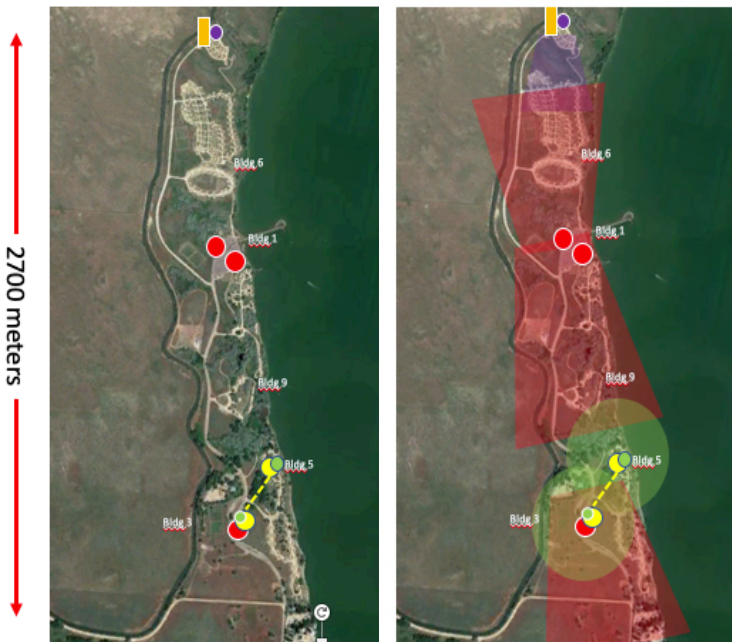
Jackson Lake State Park was established in 1962 and is known as an “oasis in the plains.” Located in northeastern Colorado, visitors enjoy some of the best boating, fishing, swimming and water skiing conditions in the state. With 3,303 acres of land and water to explore, park officials were seeking a cost effective wireless connectivity solution able to address the entire 2.7 kilometer expanse of campgrounds and marina.

Kryst Wireless' Colorado-based system integration partner- Wiggins Telephone - accepted the challenge and deployed a Super Wifi-based managed network solution supporting all visitors' standard wifi enabled devices while blanketing the entire park with just six (6) Access points.



Casey Quint – Plant Manager for Wiggins Telephone – shared, “Super Wifi’s incredible range greatly reduced the number of access points required to properly cover the park translating into a fast deployment and a lower overall solution cost. Fewer APs also means simplified network management.”

Jackson Reservoir was built by the South Platte Land, Reservoir and Irrigation Company in 1902



Wiggins Telephone used just six (6) Super Wifi APs to cover the full 2.7 Kilometers of the Jackson Lake State Park and Marina

Three different Super Wifi Access Points were used for the Jackson Lake State Park deployment...

Qty 3



A3-EI Super WiFi AP
Integrated Antenna
Dual-Band
3x3 802.11ac

QTY 2



A2
Ext. 2.4G/Int. 5G
Antenna
Wireless Bridge
2x2 802.11ac

QTY 1



C1xn+
Integrated
Antenna
Repeater

Altai Technologies' Super Wifi Access Points Combine Several Key Technology breakthroughs to Deliver Unparalleled Wi-Fi Range

- Superior RF and filter design, in conjunction with Altai's interference mitigation algorithm, offers optimal capacity and interference rejection
- Much higher TX power over competitions at the highest data rates allows up to 50% more coverage and capacity
- Altai's smart band steering and load balancing technologies allow Altai APs to dynamically utilize both 2.4GHz and 5GHz spectrums for supporting a large number of mobile users running bandwidth hungry applications



Images provided by Wiggins Telephone from the actual deployment effort at Jackson Lake State Park, CO

About Krystp Wireless

Krystp Wireless is Altai Technologies' Master Distributor for the US and Canada focused on building scaled distribution through a network of system integration partners for Altai's product line with offices in Kansas City and Toronto.

About Altai Technologies' Super Wifi Product Line

Super WiFi has been deployed extensively around the world beginning in 2007 to address the most challenging wireless access applications where traditional Wifi vendors' products fail to deliver the desired coverage, or prove too costly due to the high number of required access points.

Primary examples where Super WiFi regularly differentiates itself from other Wifi products include expansive outdoor applications, challenging line of sight environments, and RF interference laden locales such as manufacturing facilities other heavy industrial settings.

Altai's extensive product line supports connectivity for any wifi-enabled device and includes large macro base stations capable of delivering bi-directional connectivity for up to a mile in addition to a host of other micro and pico cell access points, repeaters and wireless bridging products.

Contact Krystp Wireless for Super Wifi solution design and pricing support:

 : 816.600.4220

 : info@krystpwireless.com