

## SubTropolis - A 7.5 Million Square Foot Underground Industrial Office Park Deploys Super WiFi to Provide Roadway Connectivity

Hunt Midwest is part of the Lamar Hunt family's diverse portfolio of entities involved in real estate, sports /media, energy/resources and private equity investments. SubTropolis is a 7.5 million sq ft underground industrial park located just north of Kansas City, Missouri and serves as one of Hunt's crown jewels.

Built out of an old limestone mine, this massive facility boasts many significant and recognizable tenants to include the US National Archives, The US Postal Service, a massive data center and a host of other businesses that have found the constant 68° temperature, high level of security, and a low-cost for office buildout to be extremely advantageous compared with traditional industrial real estate options.



One of the hundreds of commercial vehicles that visit SubTropolis every day approaches one of 6 entrances to the 7 million square foot complex.



A scale model shows the network of roadways connecting 65 tenants spread throughout SubTropolis

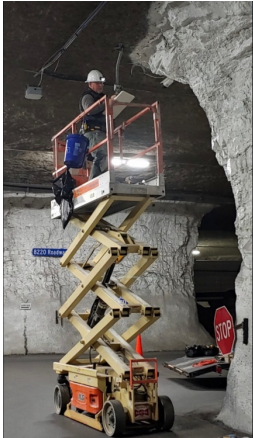
SubTropolis has roads up to two miles long throughout the facility supporting a steady stream of tractor trailers, delivery trucks and cars. Cellular service is not available in this unique, underground facility and SubTropolis needed a wireless connectivity alternative along its 8 miles of roadways to support internet access, internet-based voice services and, eventually, navigation assistance for the thousands of workers and daily visitors traveling along its 8+ miles of roadways.

After evaluating a number of options, Hunt Midwest determined Super Wifi access points' extended range would support the desired coverage with significantly less equipment compared with other technologies. Super Wifi is ideally suited to address the harsh environmental, RF and line-of-sight conditions present at SubTropolis, and the reduced number of APs resulted in a fast deployment with overall reduced costs.



Altai's Super WiFi APs combine patented technology breakthroughs to deliver an unparalleled WiFi experience over extended distances

- Superior RF and filter design, in conjunction with Altai's interference mitigation algorithm, offers optimal capacity and interference mitigation.
- Highly focused transmit and receive power supports connectivity to and from each end-point so that only signals of interest travel into and out of Altai APs while less favorable signals are isolated and ignored.
- Altai's smart band steering and load balancing technologies allow Altai to effectively utilize both 2.4GHz and 5GHz spectrums for supporting large numbers of users with bandwidth hungry applications



Super WiFi's extended range translated into 85% fewer access points, greatly reduced installation time and a lower overall project cost compared with other options considered by Hunt Midwest. Hear Mike Bell, VP of Real Estate for Hunt Midwest talk about their Super WiFi deployment [here](#).

## About Kryst Wireless

Kryst Wireless is Altai Technologies' Distributor for the US and Canada with offices in Kansas City and Toronto focused on building scaled distribution for Altai's product line through a network of highly qualified integrator partners.

## About Altai Technologies' Super WiFi Product Line

Super WiFi has been deployed extensively around the world beginning in 2007 to address the most challenging wireless access use cases where traditional WiFi vendors' products fail to deliver the desired coverage, or prove too costly due to the high number of required access points.

Primary examples where Super WiFi regularly differentiates itself from other WiFi products include expansive outdoor applications, challenging line of sight environments, and RF interference laden locales such as manufacturing facilities other heavy industrial settings.

Altai's extensive product line supports connectivity for any WiFi enabled device and includes large macro base stations capable of delivering bi-directional coverage for up to a mile in addition to a host of other micro and pico cell access points, repeaters and wireless bridging products.

Contact Kryst Wireless to connect with one of our qualified integrator partners:

 : 816.600.4220

 : [info@krystwireless.com](mailto:info@krystwireless.com)